

285

MADISON AVE





Welcome to a new era at **285 Madison.**

Under strong new ownership, 285 Madison is where vision meets stability. This iconic Midtown boutique building is redefining the workplace with turnkey pre-built offices and a brand-new amenity program—featuring a rooftop terrace overlooking the skyline, a stylish tenant lounge for hosting and unwinding and a fully equipped fitness studio to power every day.

Located in the heart of Midtown, just steps from Grand Central and Bryant Park, the building is already home to iconic brand Tommy Hilfiger and is the perfect place to fuel the success for other forward-thinking companies.

Where midtown legacy meets modern luxury.

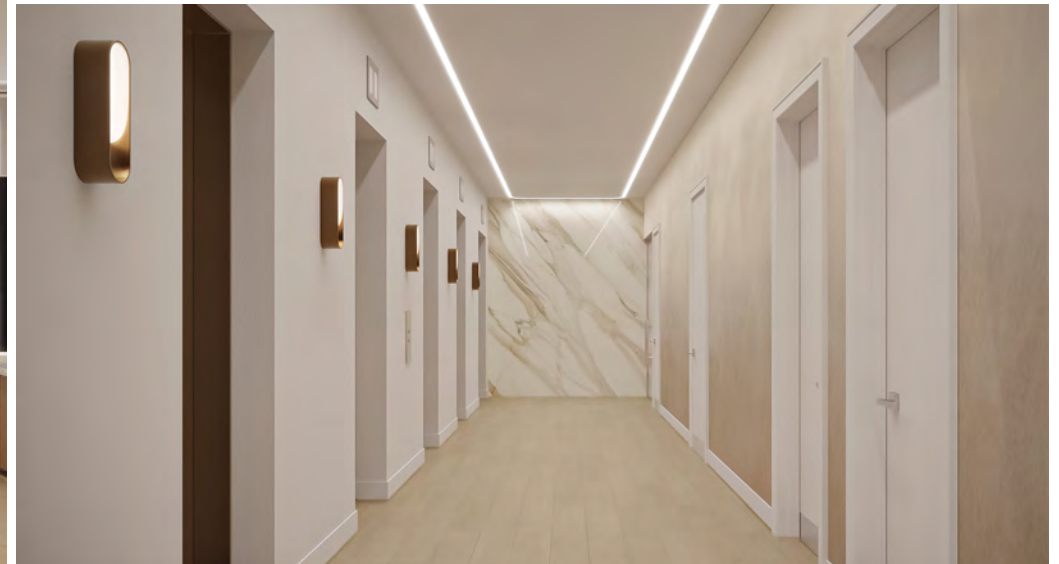


Custom 18,242 SF full floor pre-built
on the 19th floor designed for immediate impact.

PRE-BUILD



**Meticulously crafted to
fuse New York's vibrant
energy with the laid-back
calm of the West Coast.**



A pre-build that provides tenants a flexible, welcoming canvas to make entirely their own.



Floor 19

18,242 RSF - PRE-BUILD

SHARED SPACE

| | |
|-----------------|---|
| Conference Room | 2 |
| Huddle Room | 1 |
| Pantry | 1 |

WORKSPACE

| | |
|--------------------------|----|
| Reception | 1 |
| Private Office | 6 |
| Executive Private Office | 1 |
| ADA Restroom | 1 |
| Workstations | 87 |



Brand-new pre-build designed
by BR Design.

**New energy. New workday.
New amenities to experience.**



Stylish and
functional
ground floor
amenities.





Wellness amenities include a gym with yoga room, whiskey bar and golf simulator.



Penthouse lounge with
rooftop terrace.





Powerfully-placed. Quietly iconic.

New York fuels your ambition and the location of 285 Madison supports it — with everything you need before, during, and after the 9-to-5 just steps outside the doors.

Points of Interest

- | | |
|----------------------------|--------------------------|
| 1. New York Public Library | 4. Rockefeller Center |
| 2. Chrysler Building | 5. MetLife Building |
| 3. Grand Central | 6. Empire State Building |

Hotels

- | | |
|-----------------------------|-------------------------|
| 1. Waldorf Astoria New York | 5. Lexington Hotel |
| 2. The Westin | 6. Andaz, by Hyatt |
| 3. Library Hotel | 7. Sofitel |
| 4. Hyatt Grand Central | 8. The Langham, 5th Ave |

Restaurants

- | | | |
|---------------------------------|--------------------|--------------------|
| 1. La Pecora Bianca Bryant Park | 5. Bucatini | 9. Isla & Co. |
| 2. Keens Steakhouse | 6. Sweetgreen | 10. Tartinery Café |
| 3. Margaux by La Sirène | 7. Ramerino | 11. Little Collins |
| 4. IPPUDO 5th Avenue | 8. Pershing Square | 12. Zuma |

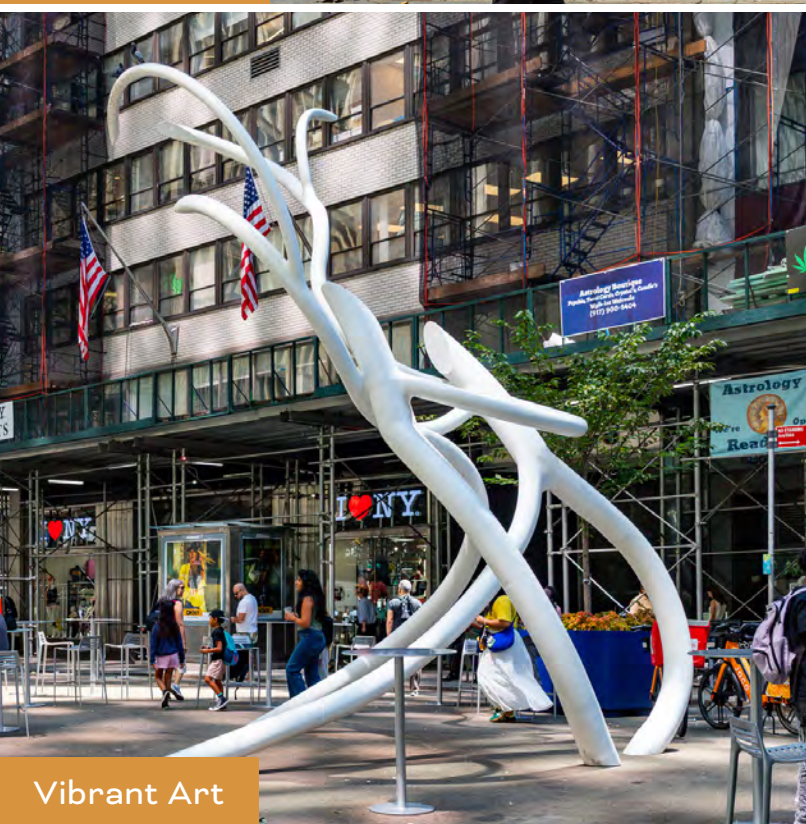




Bryant Park



Grand Central Terminal



Vibrant Art



New York Public Library



Bryant Park Grill

Everywhere you need to be in minutes.

TRANSIT



01 MIN

Citi Bike



02 MIN

Grand Central

4 5 6 7 S

MTA Long Island Rail Road

MTA Metro-North Railroad

5 MINS

B D
F M

12 MINS



Port Authority



Penn Station



34 Street Ferry

Floor 18

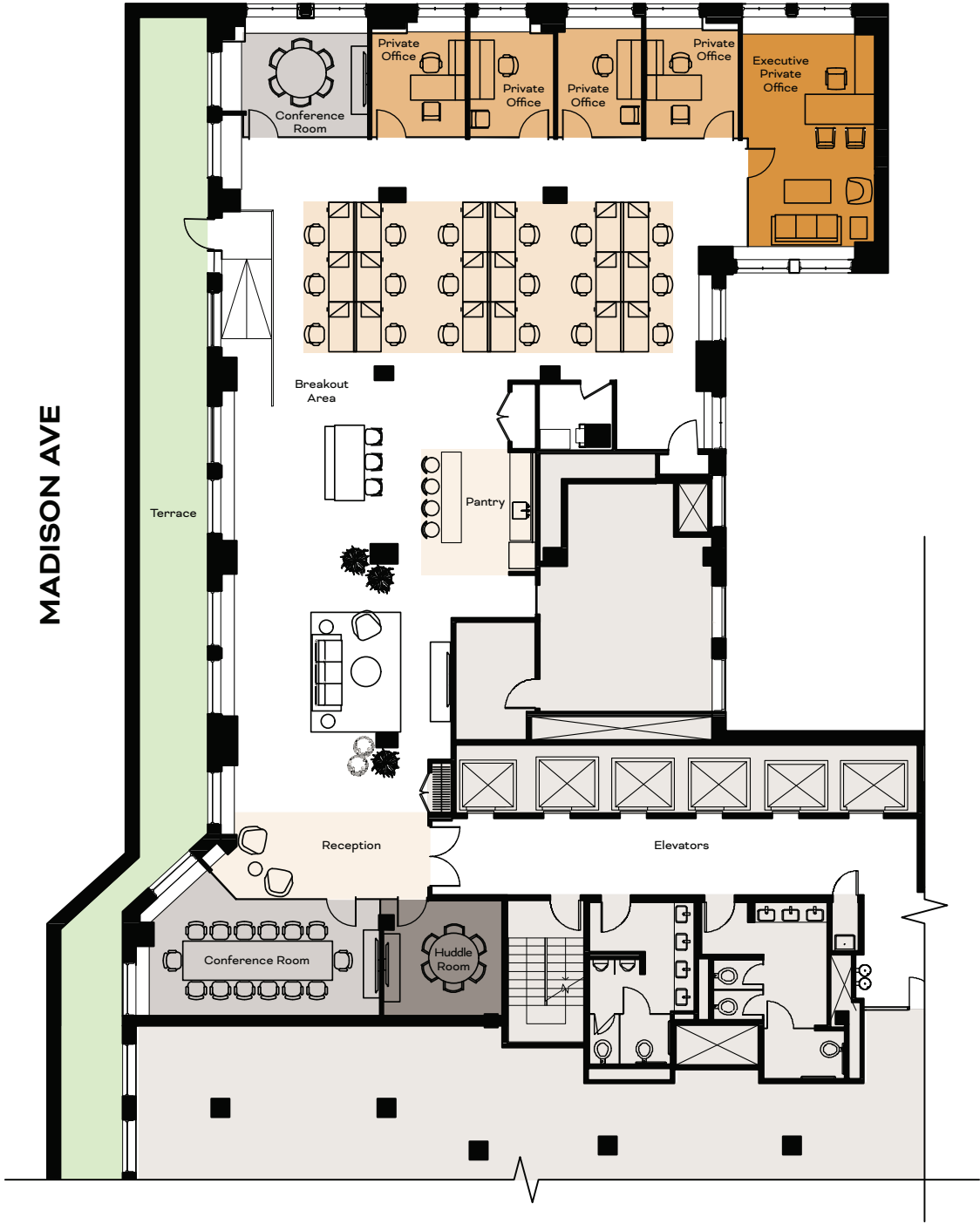
7,582 RSF - PARTIAL FLOOR

SHARED SPACE

| | |
|-----------------|---|
| Conference Room | 2 |
| Huddle Room | 1 |
| Pantry | 1 |

WORKSPACE

| | |
|--------------------------|----|
| Reception | 1 |
| Private Office | 4 |
| Executive Private Office | 1 |
| Workstations | 18 |



Brand-new high-end installation that will be delivered fully furnished. Six (6) private offices, two (2) conference rooms, and an open area.

Floor 25

6,761 RSF - PARTIAL FLOOR

SHARED SPACE

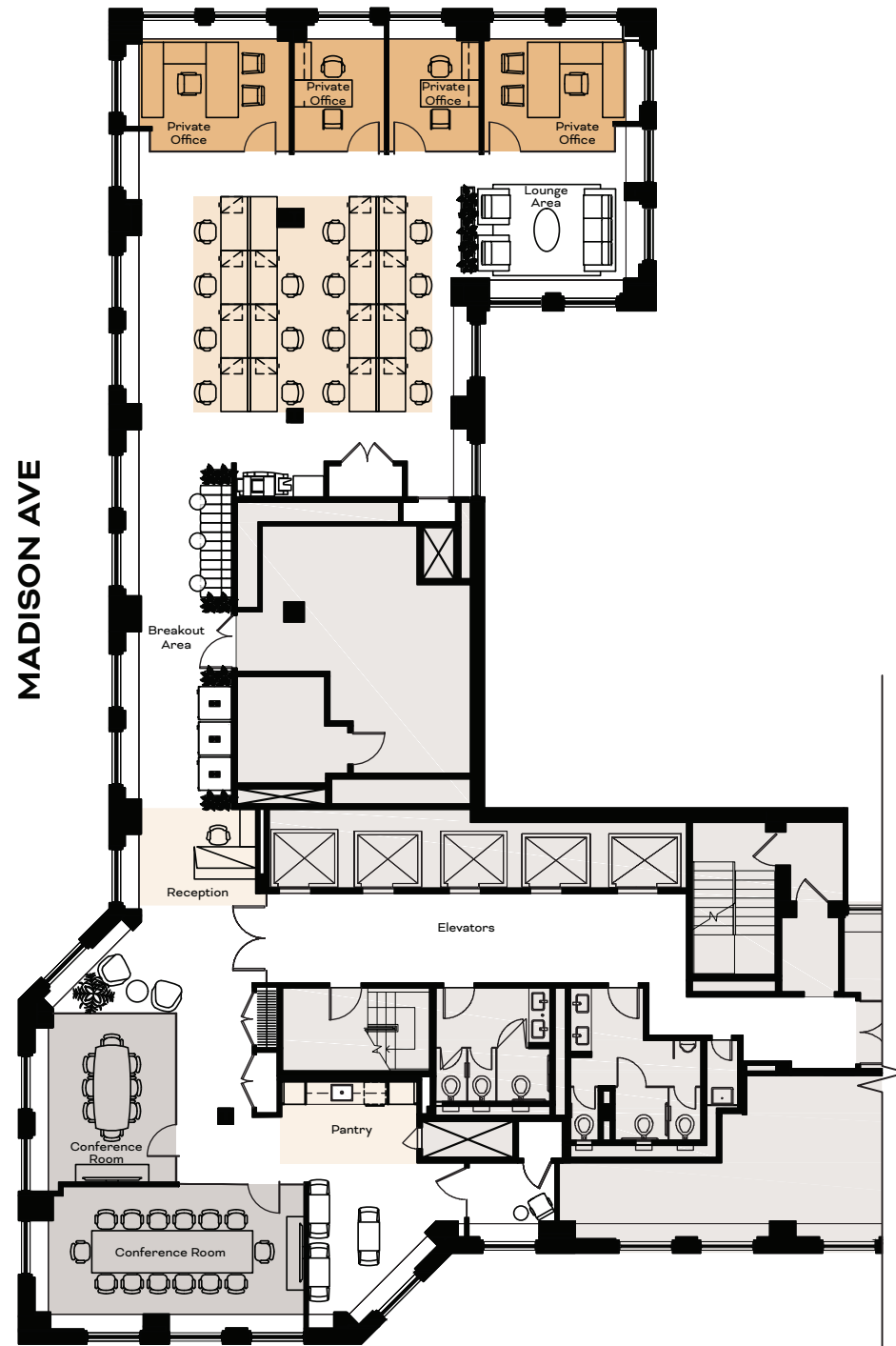
| | |
|-----------------|---|
| Conference Room | 2 |
| Pantry | 1 |

WORKSPACE

| | |
|----------------|----|
| Reception | 1 |
| Private Office | 4 |
| Workstations | 15 |



Brand-new high-end installation that will be delivered fully furnished. Four (4) private offices, two (2) conference rooms, and an open area.





New look. New leadership. Timeless address.

LEASING INQUIRIES

DAVID FALK
212.372.2271
DAVID.FALK@NMRK.COM

DANIEL LEVINE
212.372.2319
DANIEL.LEVINE@NMRK.COM

DYLAN WEISMAN
212.850.5422
DYLAN.WEISMAN@NMRK.COM



285
MADISON AVE
NEWMARK